

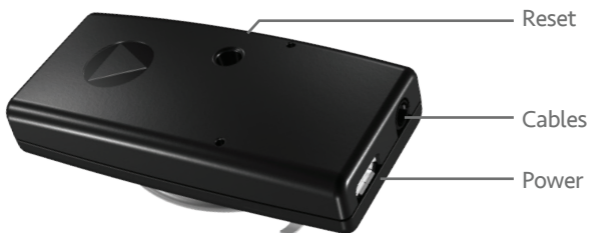


**simple**control.®

**SETUP GUIDE**

**Simple Blaster™  
Wi-Fi**

This document describes how to  
set up Simple Blaster - Wi-Fi.

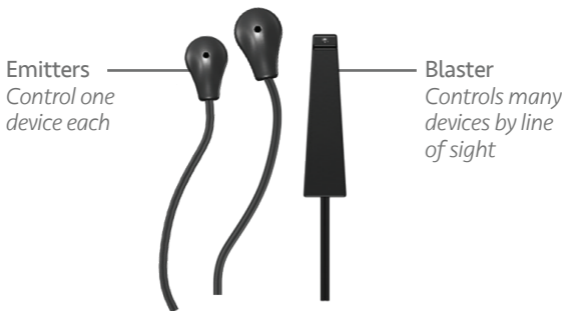


## CABLES

The Simple Blaster works with:

- **Simple Cable - Complete:** Has two emitters and one blaster; must connect directly to the Simple Blaster. Affix emitter directly over the infrared port on the target device. Position the blaster to target devices by line of sight. Configure devices controlled by the blaster for IR Port 3 on the Choose Port screen. Configure the emitter cable with the single gray band on IR Port 1 and the two gray bands on IR Port 2.
- **Simple Cable - Triple Emitter:** Has three emitters; must connect directly to a Simple Blaster. Configure the emitter cable with the white band on IR Port 1, the red band on IR Port 2, and the blue band on IR Port 3. Separate purchase.
- **Simple Cable - Serial:** Connects to a serial (RS-232) device; must connect directly to a Simple Blaster. Separate purchase.

## Simple Blaster™ Wi-Fi



- **Simple Cable - Triport Adapter:** Supports three emitters or two emitters and one blaster; must connect directly to a Simple Blaster. Used only with single cable accessories. Separate purchase.
- **Simple Cable - Emitter:** Has one emitter; connects to any port on the Simple Cable - Triport Adapter or directly to the Simple Blaster. Separate purchase.
- **Simple Cable - Blaster:** Has one blaster; connect to Port 3 on the Simple Cable - Triport Adapter or directly to the Simple Blaster. Separate purchase.
- **Simple Cable - Relay:** Provides contact closure, sensor feedback, and relay control. Must connect directly to a Simple Blaster. Separate purchase.



## CONFIGURATION

This procedure assumes the Simple Control app is installed on your iOS device and that you are using the included Simple Cable - Complete.

### To set up a Simple Blaster - Wi-Fi:

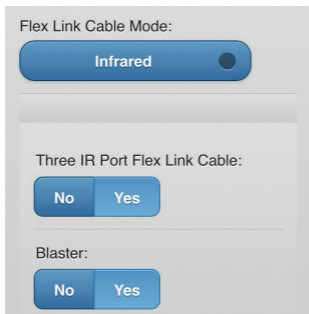
1. Find appropriate locations for the Simple Blaster and cables, then apply power to the Simple Blaster.
2. On a browser-equipped wireless device (an iPad or laptop, for example), look for available wireless networks.  
**Note:** Simple Blaster - WiFi is initially an unsecured ad-hoc Wi-Fi device.  
The name (**SimpleBlaster000C1D1EEE11**, for example) appears listed on the wireless device.
3. Join your wireless device to the Simple Blaster's ad-hoc network.
4. Open a web browser on the wireless device.  
If the web browser does not open to **<http://192.168.1.70>**, enter this address and wait for the page to display.
5. Select your home network, then enter the SSID and/or passphrase to log on to your network. The Simple Blaster joins your network and is assigned an IP address via DHCP.

## Simple Blaster™ Wi-Fi

6. Close the web browser on your wireless device, then switch it back to your home network (from the ad-hoc network).
7. Open the Simple Control app, edit a room, and tap Add Device.
8. On the Add Device screen, verify that Simple Blaster WiFi appears. It can take up to ~30 seconds for the Simple Blaster to appear.
9. Tap Simple Blaster WiFi.
10. On the Choose Port screen:
  - » Tap IR Port 1 if the target device attaches via the emitter cable with one gray band or IR Port 2 if the target device attaches via the emitter cable with two gray bands.
  - » Tap IR Port 3 if the target device connects via the blaster.
11. Finish configuring the device.
12. On the Add Device screen, tap Simple Blaster Settings.



13. Tap Flex Link Cable, then select Infrared as the Flex Link Cable Mode on the Flex Link Cable screen.



14. Because you are using a Simple Cable - Complete, set Three IR Port Flex Link Cable to Yes.
15. If the Simple Cable - Complete is controlling devices via the blaster, set Blaster to Yes. If the Simple Cable - Complete is not controlling devices via the blaster, set Blaster to No.
16. Tap Save Changes.
17. Return to the Add Device screen and tap Save.  
**Note:** The Simple Blaster comes configured to join your network automatically via DHCP. We recommend configuring your router to reserve the IP address that gets assigned to the Simple Blaster (called static DHCP or DHCP reservation). Refer to your router's documentation for more information.

## TROUBLESHOOTING

Troubleshooting tips:

- If Simple Blaster WiFi does not appear on the Add Device screen (Step 8), unplug the Simple Blaster for 10 seconds, then plug it back in. If it does not appear after 30 seconds, power cycle your iOS device. If the issue continues, make sure your router is configured to allow 802.11g Wi-Fi, then reset the Simple Blaster and try setting it up again. To reset a Simple Blaster, hold down the Reset button for ~13 seconds. When the LED blinks very fast, release the Reset button.
- If you are having issues with an infrared device: change the Retransmit Count setting on the Edit Device screen to 2 or 3 (from 1), make sure any target device that is controlled via a blaster is set to IR Port 3, and check the line of sight for any device that is being controlled via a blaster. If you are experiencing other infrared issues with a target device, refer to the infrared device section of the Simple Control FAQ.



# Questions? Contact Us.



[support@simplecontrol.com](mailto:support@simplecontrol.com)



[SimpleControl.com](http://SimpleControl.com)



Simple Control  
21580 Stevens Creek Blvd.  
Suite 106  
Cupertino, CA 95014